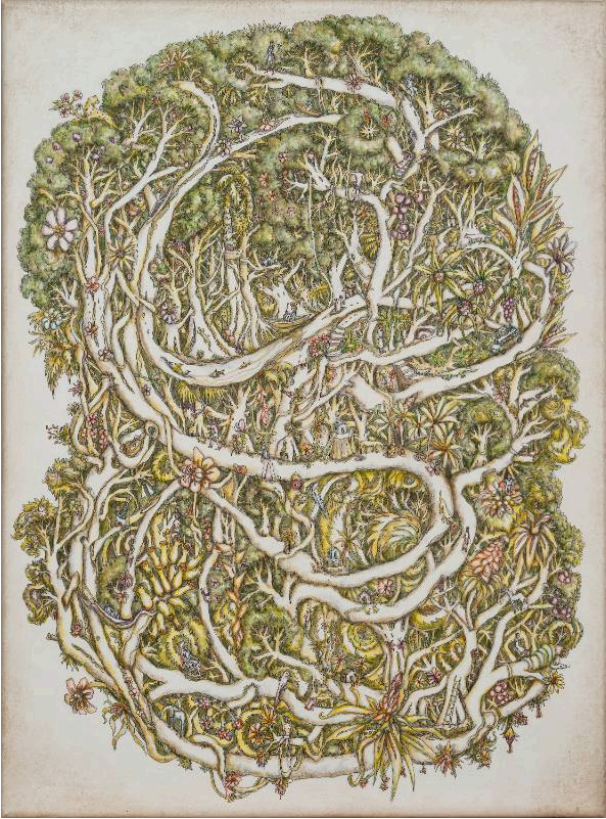


# Basic Detail Report

---



## Ravel

### Date

2016

### Primary Maker

Duque, Alexis

### Medium

acrylic on canvas

### Description

Verticle, rectangular image with white background. The curvilinear composition, resembling a figure 8, is densely packed with flora, fauna and figures at leisure. Trees intertwine, grow through and become each other. The trunks and branches transform into rivers and roads upon which figures walk, drive, lounge, canoe, and fish. Scattered amidst the lush greenery, fruit and flowers are snakes, birds, dogs, horses, chickens, a leopard and an

alligator as well as houses, boats and cars. The effect is a scene of humans coexisting in harmony in a natural paradise.

### Dimensions

canvas: 16 × 12 in. (40.6 × 30.5 cm)