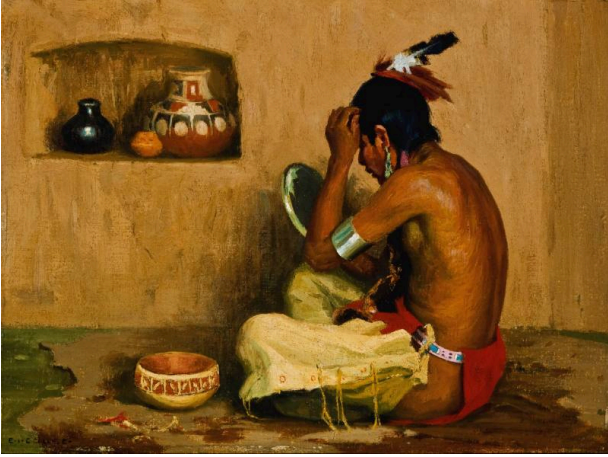


Basic Detail Report



Makeup Time

Date

circa 1925

Primary Maker

Couse, Eanger Irving

Medium

oil on board

Description

Small horizontal rectangle showing Native American dressed in loincloth; wearing feathers in hair with back to viewer; looking into mirror; pottery bowl in front of him; other pieces of pottery on shelf in front of him

Dimensions

board: 12 × 16 in. (30.5 × 40.6 cm) frame: 18 3/4 × 22 3/4 in. (47.6 × 57.8 cm)