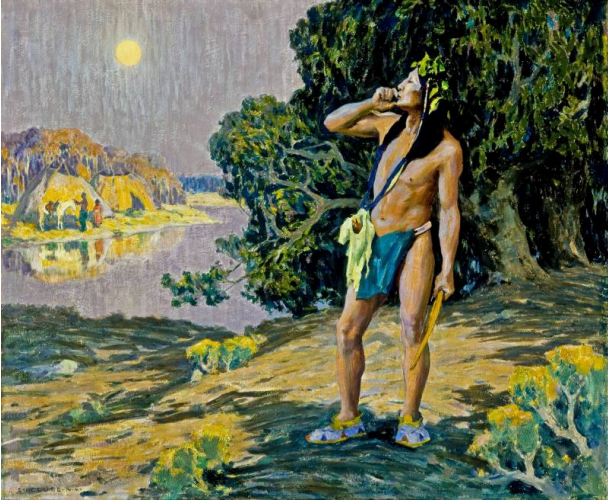


Basic Detail Report



The Call

Date

circa 1912

Primary Maker

Couse, Eanger Irving

Medium

oil on canvas

Description

Horizontal rectangle showing Native American standing near river bank in foreground; right hand to his mouth, making call; in background across river, two teepees, two people and horse.

Dimensions

canvas: 30 1/2 × 36 3/4 in. (77.5 × 93.3 cm) frame: 38 × 44 in. (96.5 × 111.8 cm)